



W5 The All-in-One Starter milling machine

THE OUTSET FOR METAL MILLING.



• Dry • Wet

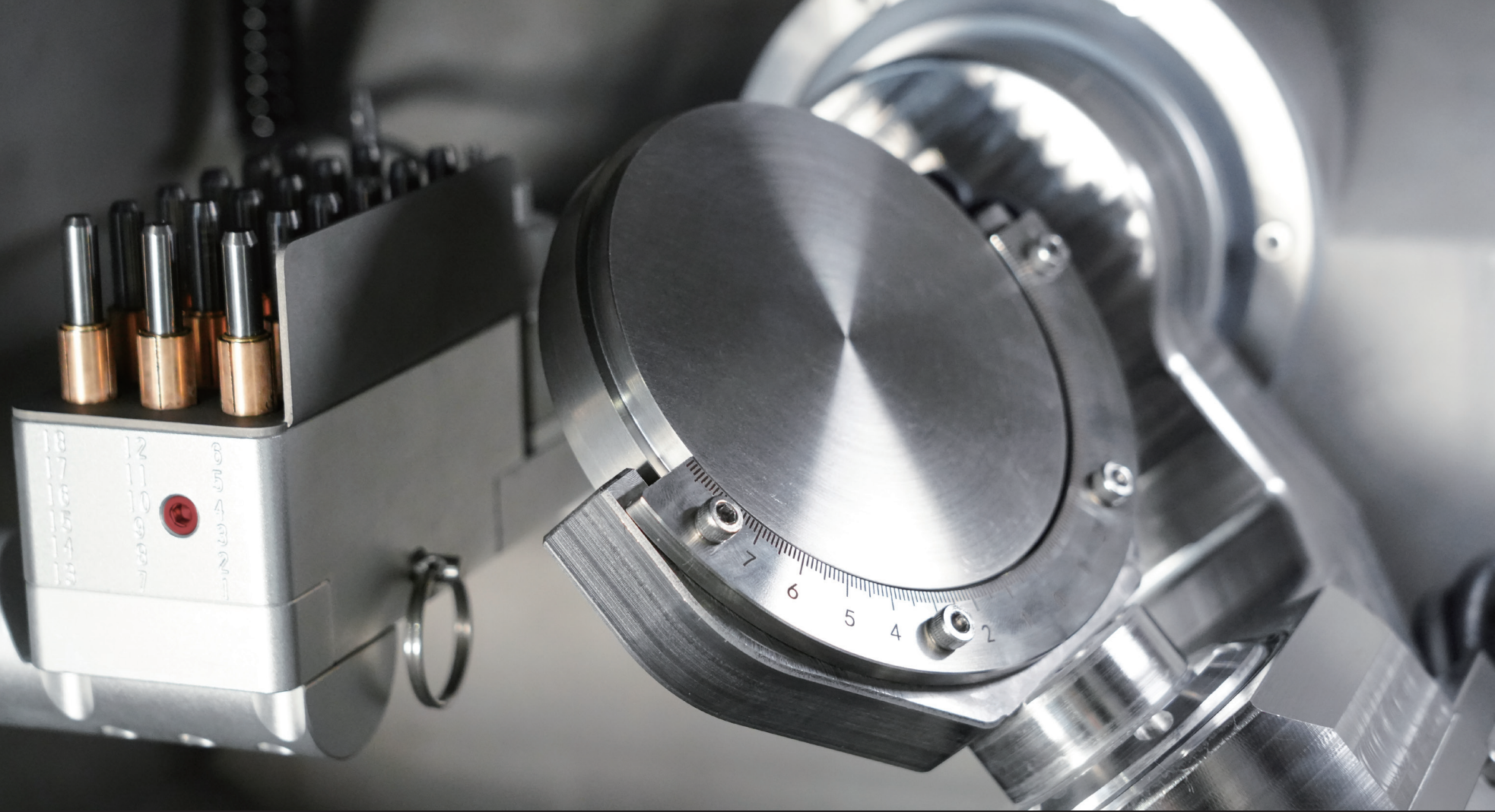
5
Axes

18x2
Tools

1
Disc

3
Pre-milled

6
Blocks



5-axis
machining



Auto
calibration



90°
vertical machining



Double
tool magazine



Modular
integrated

Your Digital Dental Milling Journey Starts Here—With the Versatile W5

Does It All and Does It Well

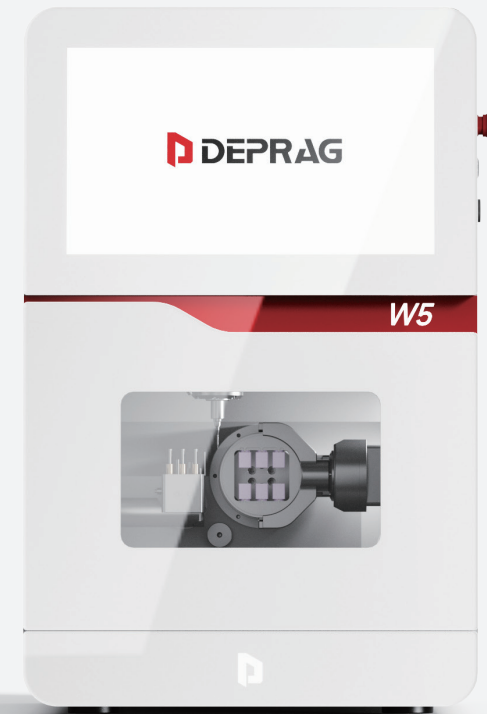
W5 delivers an all-in-one, intelligent system seamlessly integrated into daily workflows. With 5-axis and a robust 2.5kW water-cooled spindle, it machines a wide range of materials while consistently maintaining exceptional product quality.

Let W5 Handle the Complexities

Why struggle with complicated machines? W5 revolutionizes your workflow with intelligent automation. Its dual dry/wet separation system ensures optimal performance for any material. Its auto calibration ensures consistent accuracy through every job. With automated cleaning, you'll finish daily work earlier.

The Open Dental Milling Solution That Adapts to You

W5 is compatible with Millbox, Hyperdent and WorkNC software, enabling you to work with the CAM platform you are comfortable with. Its modular, integrated design grows with your business.



Processing mode	Dry&Wet
Millable material	Titanium, Pre-milled blank, Glass ceramics Zirconia, PMMA, PEEK, Wax
Basic construction	Aluminium
Tool	18x2 (Removable tool magazine)

Number of axes	5
Spindle power	2.5kW
Spindle collet	φ6mm
Spindle cooling method	Water cooling
CAM Software Adaptation	Millbox / Hyperdent / WorkNC available

Discover What's New in the W5

THE CLASS-LEADING DENTAL MILLING SOLUTION
EXPERIENCE IT NOW!



Built-in automatic calibration

- ✓ No external wiring required;
- ✓ Guided calibration;
- ✓ Ultra-high precision: 0.01mm;



Integrated design

- ✓ Integrated base cabinet for vacuum cleaner&water tank&water cooler;
- ✓ Most convenient to move;



Easy-to-use operating system

- ✓ True wireless remote function: control device/transfer files;
- ✓ Win10 system;
- ✓ Guided access, minimal training required;



The Perfect Balance of Design Aesthetics & Practical Functionality

No More Guesswork: Smart Lights Show Lab Status in a Flash

The overhead status light is like an attentive assistant - the color-coded system keeps you informed at a glance, ensuring you're always in control.

Ultra-HD Touchscreen: Handle Tasks with Tablet-like Ease

The HD touchscreen and Windows 10 interface make every workflow intuitive. The screen is highly responsive, saying goodbye to mis-taps, while the expansive display lets you view a full picture without constant zooming.

Effortless Access: Electromagnetic Door with Spacious Opening

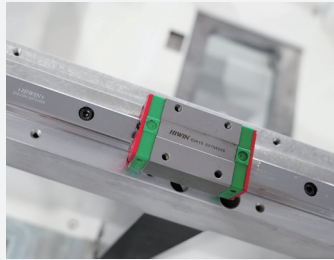
W5's electromagnetic door guarantees secure, motorized functioning, with no magnetic decay over time. Its wide-opening feature offers plenty of room for changing material, maintenance, and cleaning.

Tired of Cleaning? Meet the Elegant Wipe-and-Go Design

Sleek glass front and metal body deliver effortless maintenance - its dust-resistant surfaces wipe clean in seconds, keeping it looking spotless through your busiest lab days, all wrapped in a refined industrial aesthetic.



Key Features at a Glance



Precision Performance

- ✓ C5 grade high precision ball screw
- ✓ P grade guide rail
- ✓ High resolution servo control system
- ✓ 5 μ m repetition accuracy
- ✓ Hybrid ceramic ball bearings (<3 μ m concentricity)



Stable Output Quality

- ✓ 2.5kW spindle (Φ 62mm) for powerful machining
- ✓ Professional water-cooled system extends machine service life
- ✓ Integrated casting body guarantees stable milling



Flexible Multi-Indication Processing

- ✓ 90° vertical machining for diverse material
- ✓ Pre-calibrated fixture scales for indication-specific setups
- ✓ Automatic calibration reduces material waste by 15%



Smart Tool Management System

- ✓ Automatic Tool Change
- ✓ Dual Wet/Dry milling magazine

Various materials and indications

Zirconia	PMMA	PEEK	Composite
Titanium	Pre-milled	Glass ceramics	
Crown/Bridge	Veneer	Inlays/Onlays	Abutments
Model cast	Denture	Occlusal splint	Screw-retained bridge
Surgical guide	Implant bar		



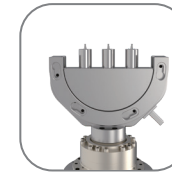
Block holder

- 6 processing positions
- Applicable to block materials: glass ceramics, zirconia, resins, PMMA



Half-open blank holder(C-CLAMP)

- Suitable for processing $\varnothing 98\text{mm}$ discs
- Enables 5-axis milling up to 90° axis adjustment
- Maximum material thickness 35mm



Premill Abutment holder

- 3 positions for pre-milled blank
- Available systems: Geo, Medentika

Titanium milling bars

T1 3.0/6.0mm
Roto, Diamond coated



T2 2.0/6.0mm
Roto, Diamond coated



T3 1.5/6.0mm
Roto, Diamond coated



T4 1.0/6.0mm
Roto, Diamond coated



T5 0.5/6.0mm
Roto, Diamond coated



T6 2.0/6.0mm
End mill, Diamond coated



T7 1.5/6.0mm
End mill, Diamond coated



T8 1.5/6.0mm
End mill, Diamond coated



T9 2.0/6.0mm
Flat, Diamond coated



T10 1.0/6.0mm
Flat, Diamond coated



Glass ceramic milling bars

T11 2.5/6.0mm
Roto, Diamond coated



T12 1.0/6.0mm
Roto, Diamond coated



T13 0.6/6.0mm
Drill, Diamond coated



Resin milling bars

T14 2.0/6.0mm
Roto, Diamond coated



T15 1.0/6.0mm
Roto, Diamond coated



T16 0.6/6.0mm
Roto, Diamond coated



T17 1.5/6.0mm
Flat, Diamond coated



T18 5.0/6.0mm
Flat, Diamond coated



Zirconia milling bars

T1 2.0/6.0mm
Roto, Diamond coated



T2 1.0/6.0mm
Roto, Diamond coated



T3 0.6/6.0mm
Roto, Diamond coated



T4 1.5/6.0mm
Flat, Diamond coated



T5 0.3/6.0mm
Roto, Diamond coated



Ti-T4

T13

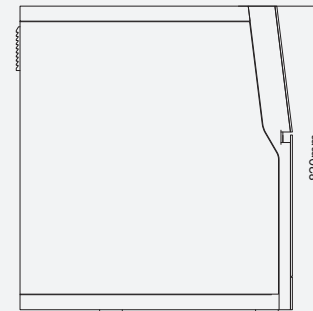
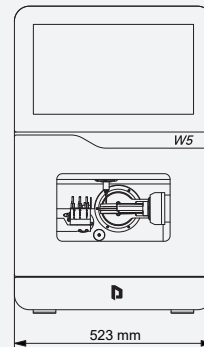
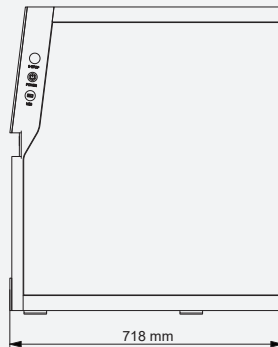
T18

Technical Parameters

General	
Processing mode	Dry&Wet
Millable material	Zirconia, Glass ceramics, Plastics Wax, PEEK, Composite, Titanium
Applications	Crown Bridge, Veneer, Inlay Onlay, Abutment, Denture, Screw-retained bridge, Model cast, Occlusal splint, Surgical guide, Implant bar
Power	220V/3.2kW
Dimension	523x718x820 mm
Weight	130 kg
Air supply pressure	>0.5 MPa
Air flow	>90 L/min
Water tank capacity	10L

Structure parameters	
Basic construction	Aluminium
Number of axes	5
Rotary axis A-axis	360°
Rotary axis B-axis	-30°~+90°
Tool	18×2

Spindle	
Speed	60,000 rpm
Power	2.5kW
Positioning/Repositioning accuracy	0.01/ 0.005 mm
Collet	Φ6 mm
Cooling method	Water cooling



ABOUT US

DEPRAG is a global dental technology enterprise specializing in digital dental materials, smart devices, and cloud-based services, with comprehensive coverage across restorative, orthodontic, and implant dentistry. Through material science innovation and digital ecosystem development, the company is driving the transformation of dental care from traditional experience-driven practices to a digitally-driven model.

Zhengzhou

- Headquarters
- Dental Materials and Software R&D Center
- Marketing Center
- Dental Lab

Shenzhen

- Dental Equipment R&D, Manufacturing and Training Center
- Product Display Center

Anyang

- Dental Materials
- Manufacturing Center



DEPRAG (Zhengzhou) Dental Technology Co., Ltd.

Web:depragdental.com

Email: info@depragdental.com

Add:No.14, No.8 Floor, Building 7, No.289 West Third Ring Road, High-tech Industrial Development Zone, Zhengzhou City, Henan Province, China.

Machines



Watch the video

Materials



Watch the video